

Motion Coordinator Application Note

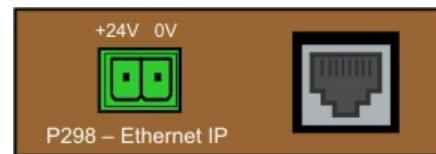
Number:MC-1038, Revision 1, 2/28/2007
Subject: Ethernet IP daughter board setup

1. Introduction:

The new P298 Ethernet IP Daughter Board requires some specific setup sequences, written in MC BASIC, to be run when used with the first release of system software. (v1.63 Dev 39 or later)

2. Applicability:

Ethernet IP Daughter Board P298.
MC206/MC224 System Software V1.63 Dev 39
or higher.



3. Interface to HMS Anybus module:

The P298 is designed around the Ethernet IP Anybus module from HMS. Access to the memory and functions of the module are via a 16 bit read/write interface with an address range from 0 to 65535. (\$0000 to \$FFFF) A new command has been added to the MC BASIC language that allows a programmer to read and write the Anybus module's memory.

Read:

```
ETHERNET_IP(slot_number, function, index, #params, vr_base_index)
```

Write:

```
ETHERNET_IP(slot_number, function, index, param1, [param2, param3, param4])
```

slot_number : the physical daughter board slot where the P298 is located (0 for MC206).

function : 0 = read, 1 = write.

index : memory address to be accessed.

#params : number of parameters to be read consecutively from the address.

1 = only the parameter at the address is read.

2 = address and address+1 are read.

3 = address > address+2 are read.

4 = address > address+3 are read.

vr_base_index : the starting index of a block of up to 4 VRs to read data into.

param1 ..param4 : values to be written to address, address+1, address+2, address+3.

The Ethernet_IP function returns either TRUE (-1) or FALSE (0) to indicate the success or otherwise of the function call.

Motion Coordinator Application Note

Number:MC-1038, Revision 1, 2/28/2007

Subject: Ethernet IP daughter board setup

4. Starting the Ethernet IP board:

The following sequence checks that the communication to the P298 is good and then sets the mode bit to start the Ethernet IP board operation.

```
' Get status to establish communications
FOR i=1 TO 10
  cf=ETHERNET_IP(slot_no,rd,$5002,1,vbase)
  IF cf=TRUE THEN
    GOTO setmode
  ENDIF
NEXT i
PRINT #5,"Error - can't communicate with EthernetIP db"

setmode:
ETHERNET_IP(slot_no,wr,$5001,1) ' set mode word to 1
```

(See (1) Pages 3-1, 7-1 and 7-2)

5. Setting IP address and subnet mask:

Before the P298 can be used on an Ethernet system, the IP address, subnet mask, default gateway etc. must be set. This routine writes the values to the registers in the Anybus module. Note that the values are stored in FLASH EPROM and thus are retained after power is removed. The power must be cycled off/on before these address values are initialised and the ethernet connection can be used.

Motion Coordinator Application Note

Number:MC-1038, Revision 1, 2/28/2007

Subject: Ethernet IP daughter board setup

```
setup_ethernet:
  ' IP address
  v1=192 : v2=168 : v3=0 : v4=252
  p1=v1*256+v2
  p2=v3*256+v4
  PRINT #5,HEX(p1),HEX(p2)
  ETHERNET_IP(slot_no,wr,$7004,p1,p2)
  ' subnet mask
  v1=255 : v2=255 : v3=255 : v4=0
  p1=v1*256+v2
  p2=v3*256+v4
  PRINT #5,HEX(p1),HEX(p2)
  ETHERNET_IP(slot_no,wr,$7009,p1,p2)
  ' Default Gateway
  v1=192 : v2=168 : v3=0 : v4=225
  p1=v1*256+v2
  p2=v3*256+v4
  PRINT #5,HEX(p1),HEX(p2)
  ' ETHERNET_IP(slot_no,wr,$700d,p1,p2)
  ETHERNET_IP(slot_no,wr,$7019,0) ' DHCP Enable OFF
  ETHERNET_IP(slot_no,wr,$701e,0) ' Data Rate = Auto
RETURN
```

(See (2) pages 13-1 and 13-2)

6. Reading the IP address and subnet mask:

This routine reads the IP address and subnet mask that are currently in use. The values are printed in the Motion Perfect terminal in the usual "dot" format.

```
read_ethernet_settings:
  ETHERNET_IP(slot_no,rd,$7007,2,vbase)
  v1=(VR(vbase) AND $ff00)/256
  v2=VR(vbase) AND $ff
  v3=(VR(vbase+1) AND $ff00)/256
  v4=VR(vbase+1) AND $ff
  PRINT #5,"IP Address: ";v1[0];".";v2[0];".";v3[0];".";v4[0]
  PRINT #5,HEX(VR(vbase));HEX(VR(vbase+1))
```

Motion Coordinator Application Note

Number:MC-1038, Revision 1, 2/28/2007

Subject: Ethernet IP daughter board setup

```
ETHERNET_IP(slot_no,rd,$700b,2,vbase)
v1=(VR(vbase) AND $ff00)/256
v2=VR(vbase) AND $ff
v3=(VR(vbase+1) AND $ff00)/256
v4=VR(vbase+1) AND $ff
PRINT #5,"Subnet Mask: ";v1[0];".";v2[0];".";v3[0];".";v4[0]
PRINT #5,HEX(VR(vbase));HEX(VR(vbase+1))
```

```
ETHERNET_IP(slot_no,rd,$700f,2,vbase)
v1=(VR(vbase) AND $ff00)/256
v2=VR(vbase) AND $ff
v3=(VR(vbase+1) AND $ff00)/256
v4=VR(vbase+1) AND $ff
PRINT #5,"Def Gateway: ";v1[0];".";v2[0];".";v3[0];".";v4[0]
PRINT #5,HEX(VR(vbase));HEX(VR(vbase+1))
```

```
ETHERNET_IP(slot_no,rd,$701a,1,vbase)
PRINT #5,"DHCP Enable: ";VR(vbase)[0]
```

```
ETHERNET_IP(slot_no,rd,$701f,1,vbase)
PRINT #5,"Data Rate: ";VR(vbase)[0] ' 0=Auto, 1=10MHz, 2=100MHz
```

RETURN

(See (2) pages 13-1 and 13-2)

Motion Coordinator Application Note

Number:MC-1038, Revision 1, 2/28/2007

Subject: Ethernet IP daughter board setup

7. Reading/writing the fieldbus data

The Anybus module has a common data area that can be accessed by both the fieldbus and the Motion Coordinator. This data area can be mapped to Modbus and/or Ethernet IP by setting certain parameters in the module. As a simple example this routine maps the Modbus TCP to the data area so that a remote master can read and write data using this protocol.

```
' set up the common data area
ETHERNET_IP(slot_no,wr,$6001,32) ' FB Out data area size (param 41)
ETHERNET_IP(slot_no,wr,$6018,32) ' SCI In data area size (param 64)

ETHERNET_IP(slot_no,wr,$601b,$0000) ' set offset in FB Out area (param 67)
ETHERNET_IP(slot_no,wr,$601c,32) ' set data size of FB Out area (param 68)
ETHERNET_IP(slot_no,wr,$6006,$0000) ' set offset in FB In area (param 46)
ETHERNET_IP(slot_no,wr,$6007,32) ' set data size of FB In area (param 47)

'ETHERNET_IP(slot_no,wr,$5001,1) ' set mode word to 1

REPEAT
  ' read and display the data from FB Out (data coming to us)
  ETHERNET_IP(slot_no,rd,$1000,4,vbase)
  PRINT #5,HEX(VR(vbase)),HEX(VR(vbase+1)),HEX(VR(vbase+2)),HEX(VR(vbase+3))
  WA(500)
UNTIL FALSE
```

Notice that there are 2 separate 16-bit words (32 byte) areas, one for data coming into the Motion Coordinator and the other for data going out. The repeat loop above reads 4 words from this data area and prints them on the Motion Perfect terminal 5. The data is written to from Modbus TCP using the Modbus function 6, write single register or function 16, write multiple registers addressed at 40001 to 40016.

Data going out of the Motion Coordinator must be written using the command:

```
' Write my data out (var1...var4) to the PLC
ETHERNET_IP(slot_no,wr,$0000,var1,var2,var3,var4) `Sends 4 words to PLC
```

The above ETHERNET_IP command is read within the daughter board over Modbus TCP using Modbus function 4, read input registers addressed at 30001 to 30016.

(See also (2) chapters 5, 6 and 11)

Motion Coordinator Application Note

Number:MC-1038, Revision 1, 2/28/2007
Subject: Ethernet IP daughter board setup

8. Ethernet-IP protocol configuration.

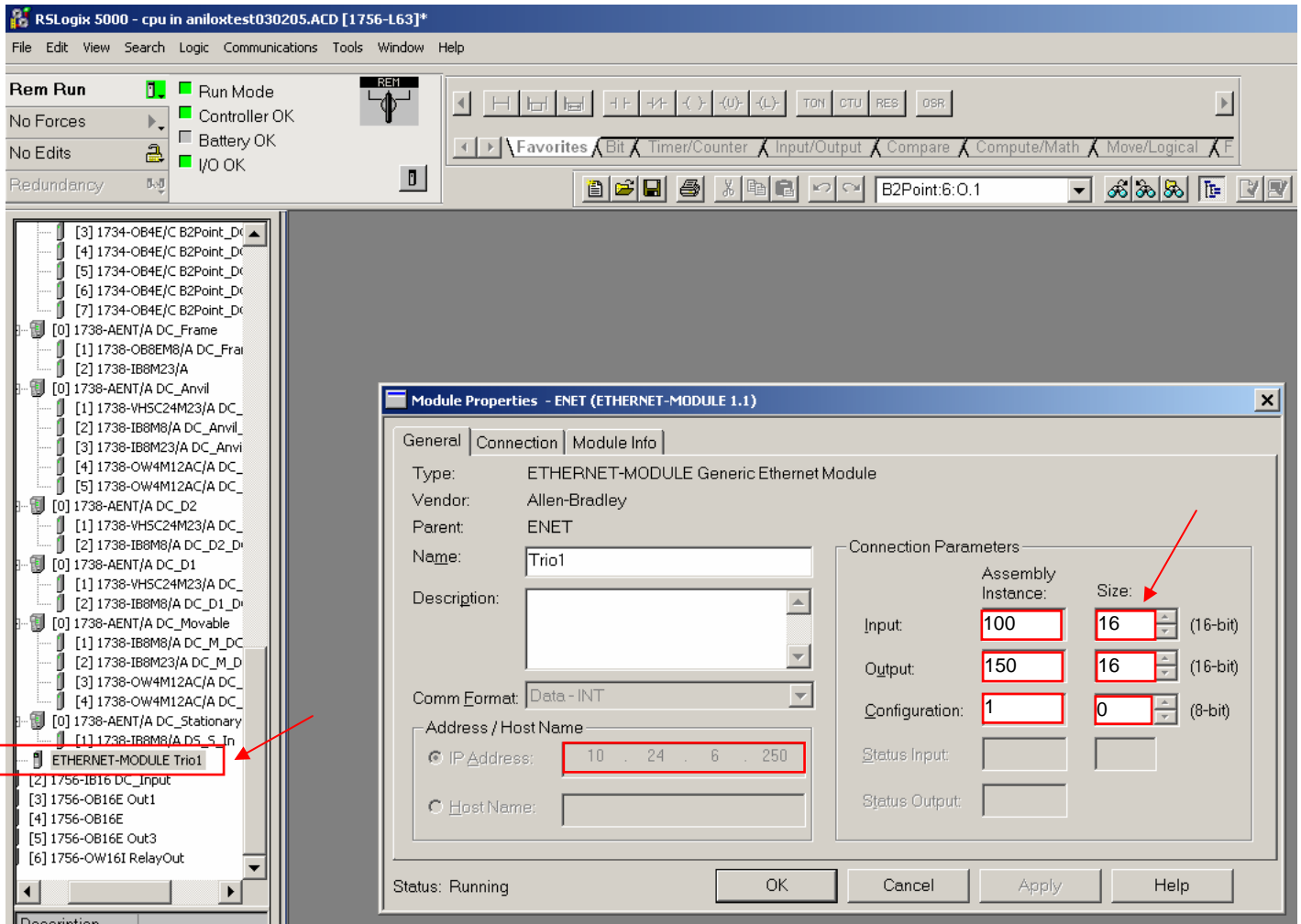
This section explains how to set up the PLC side (field bus) for use with the MC P298 Ethernet-IP daughter board. The MC P298 daughter board is permanently set as a server (slave) device on the network. The PLC (or other) must be a client (master) to communicate with the MC. Specifically, the Allen Bradley RSLogix™ 5000 PLC is used here as an example. The MC's IP address and subnet mask should have been set as defined in Section 5 of this note.

To allow the PLC to identify the MC unit, the supplied EDS file must be loaded into the PLC. This is done using the RSLogix™ 5000 software. Once the MC is found on the network it will show up in the RSLogix™ 5000 software device list (screen1). Several connection parameters need to be set for proper communications. The RSLogix™ 5000 software Connection Parameter window can be found in Module Properties for MC (screen1). The six parameters below define the MC properties.

Assembly Instance [Input]: 100	Size [Input]: 16
Assembly Instance [Output]: 150	Size [Output]: 16
Assembly Instance [Configuration]: 1	Size [Configuration]: 0

Motion Coordinator Application Note

Number:MC-1038, Revision 1, 2/28/2007
Subject: Ethernet IP daughter board setup



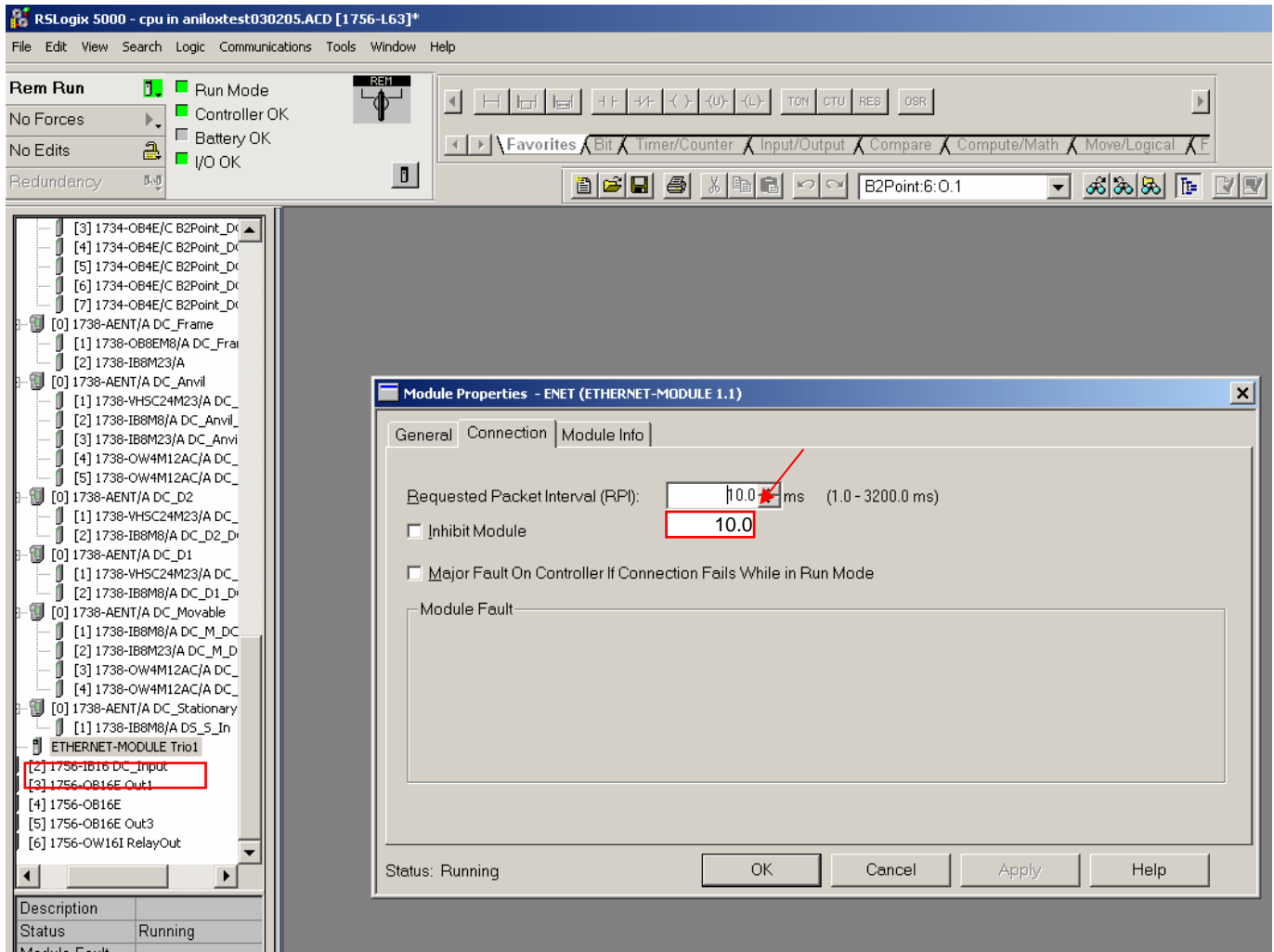
Screen1 – RSLogix™ 5000 Program showing MC identified and setup parameters

The MC's IP address is also visible in the "General" tab of the Module Properties (screen1).

Moving to the "Connection" tab within Module Properties shows the Requested Packet Interval. This should be set to 10ms (screen2)

Motion Coordinator Application Note

Number:MC-1038, Revision 1, 2/28/2007
Subject: Ethernet IP daughter board setup

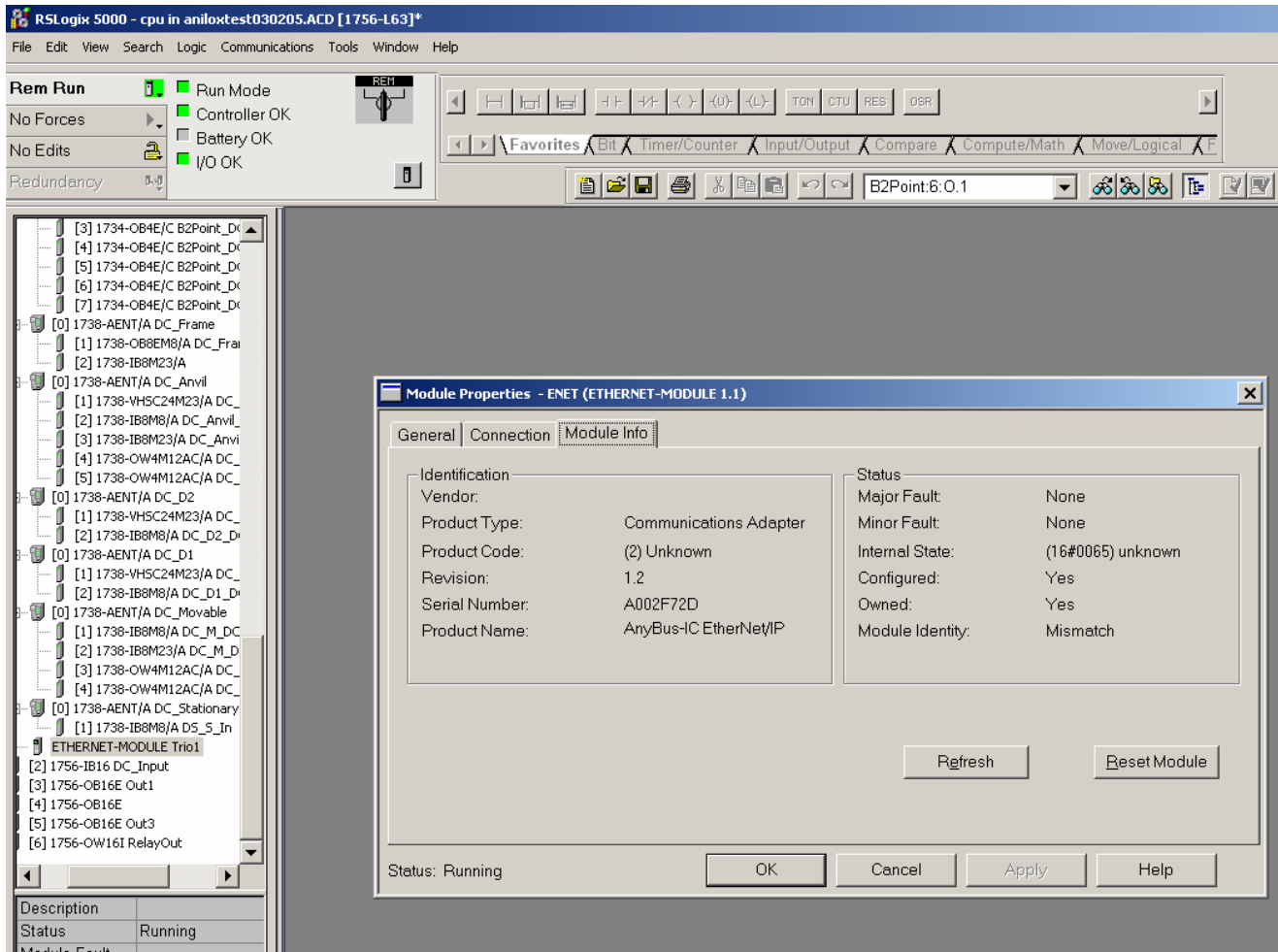


Screen2 – RSLogix™ 5000 Program showing Requested Packet Interval

Motion Coordinator Application Note

Number:MC-1038, Revision 1, 2/28/2007
Subject: Ethernet IP daughter board setup

The MC's identification (displays as AnyBus-IC EtherNet/IP) can be seen at the "Module Info" tab within the Module Properties window (screen3).



Screen3 – RSLogix™ 5000 Program showing MC Module Info

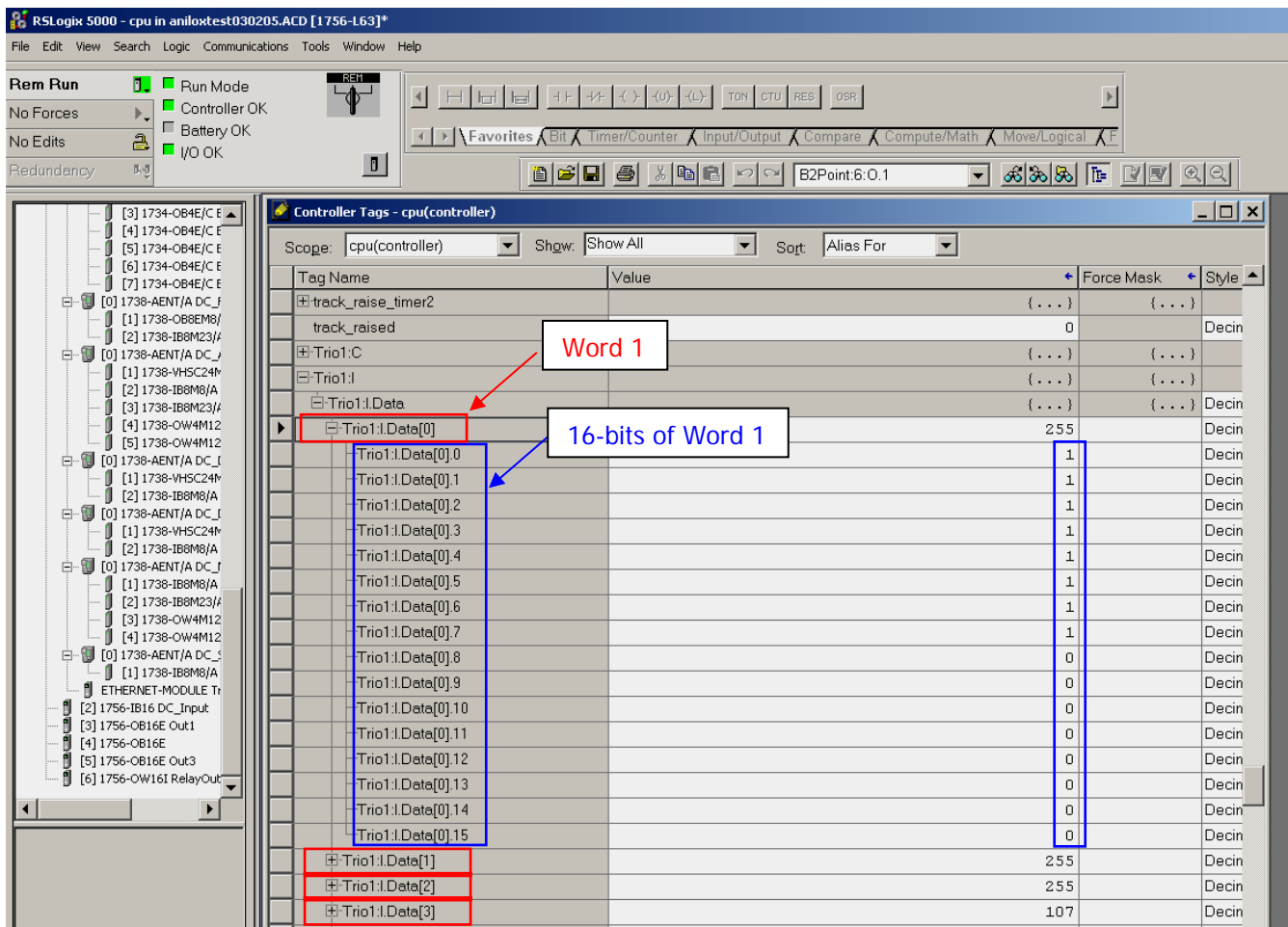
Motion Coordinator Application Note

Number:MC-1038, Revision 1, 2/28/2007
Subject: Ethernet IP daughter board setup

After you confirm proper communications and setup of the MC Ethernet-IP link, you can begin sending and receiving up to (4) 16-bit words. Data sent to the PLC from the MC BASIC program is accomplished using

```
' Write my data out (var1...var4) to the PLC  
ETHERNET_IP(slot_no,wr,$0000,var1,var2,var3,var4) `Sends 4 words to PLC
```

Note these are (4) words of 16-bit integer values. Some PLCs' flip the order of least significant byte (LSB) and most significant byte (MSB). This is hardware dependent based on the processor used in the PLC. In the case of the RSLogix™ 5000 PLC, the two 8-bit bytes per 16-bit word are flipped (screen4).



Tag Name	Value	Force Mask	Style
track_raise_timer2	(...)	(...)	
track_raised	0		Decin
Trio1.C	(...)	(...)	
Trio1.I	(...)	(...)	
Trio1.I.Data	(...)	(...)	Decin
Trio1.I.Data[0]	255		Decin
Trio1.I.Data[0].0	1		Decin
Trio1.I.Data[0].1	1		Decin
Trio1.I.Data[0].2	1		Decin
Trio1.I.Data[0].3	1		Decin
Trio1.I.Data[0].4	1		Decin
Trio1.I.Data[0].5	1		Decin
Trio1.I.Data[0].6	1		Decin
Trio1.I.Data[0].7	1		Decin
Trio1.I.Data[0].8	0		Decin
Trio1.I.Data[0].9	0		Decin
Trio1.I.Data[0].10	0		Decin
Trio1.I.Data[0].11	0		Decin
Trio1.I.Data[0].12	0		Decin
Trio1.I.Data[0].13	0		Decin
Trio1.I.Data[0].14	0		Decin
Trio1.I.Data[0].15	0		Decin
Trio1.I.Data[1]	255		Decin
Trio1.I.Data[2]	255		Decin
Trio1.I.Data[3]	107		Decin

Screen4 – RSLogix™ 5000 Program showing MC 16-bit word values

Motion Coordinator Application Note

Number:MC-1038, Revision 1, 2/28/2007

Subject: Ethernet IP daughter board setup

9. Bibliography

Please refer to the following documents for further information. Some suggested page references are given here, but these are not the only sections covering the subject(s) discussed.

- 1) Anybus IC - Design Guide, revision 1.30
- 2) Anybus IC EIP - Fieldbus Appendix, revision 1.12