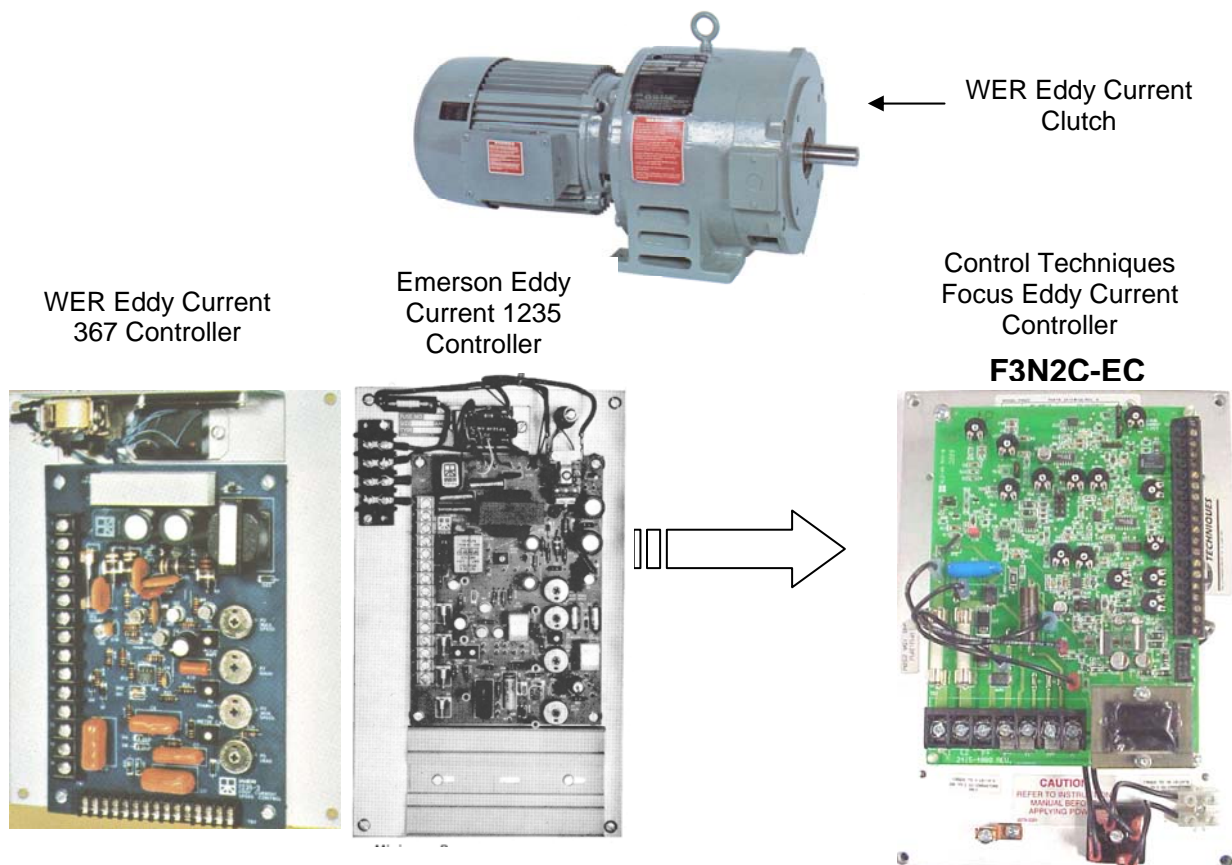


The Application Note is pertinent to the Focus 3 Family

## A Replacement Solution for 1235 / 367 Eddy Current Controllers

The Eddy Current controls were a very popular means of providing variable speed control of a machine back in the 1970's. A simple 10-amp eddy current controller could actually control the speed/torque of a 900 hp motor. The **F3N2C-EC** can provide coil current up to 10 amps dc in 5 ranges starting at 2.7amps by setting a programming jumper. This current level can be "fine tuned" to the exact coil current of the clutch being controlled. For more specific information, refer to CTAN213 via the Internet by clicking the following link:

[http://www.emersonct.com/download\\_usa/appNotes/CTAN213.pdf](http://www.emersonct.com/download_usa/appNotes/CTAN213.pdf)



[http://www.emersonct.com/support\\_usa/upgradeAssis.htm](http://www.emersonct.com/support_usa/upgradeAssis.htm)

**ANY QUESTIONS / CONCERNS ??**

**Contact Control Techniques Technical Support @ 1-800-367-8067**