

Commander SK Digital AC Drives

Come learn how to setup, optimize and in general get the most out of your Commander SK Digital AC Drives. Working on high-powered drives like these for the first time can be



**Our Commander SK
AC Drive Family
(1/4-200HP)**

intimidating. To get you over that fear, our students work at their desk with a small AC Induction motor before working with the larger motors at the Load Benches. On our trainers, motor setup and tuning procedures can be practiced and results observed using our CTScope software. Each student will log several hours on a laptop PC to gain proficiency using our CTSoft configuration and software diagnostic tools.

Diagnostic Tools...

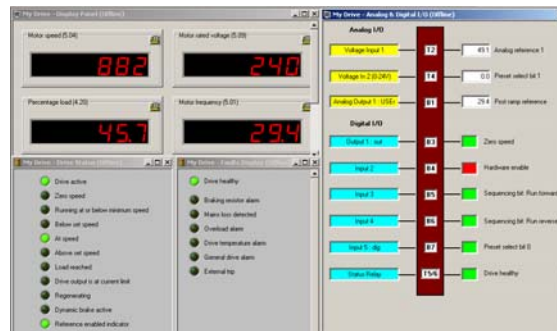


Do you have a 4 Channel Soft-Scope that can record and print in color back in your shop....?

Didn't think so- most people don't.
But you will take CTScope home with you...
and with the training on how to use it.



Learn how to create diagnostic screens to make your job easier and setup faster



As part of the class, and included on the CDROM, you will learn how to capture drive performance waveforms and print them for analysis. Being able to see what is happening is a crucial step in diagnosing any drive problem. Our software scope runs on a PC and can display up to 4 different signals simultaneously. These waveforms can be captured and placed into any Windows™ program so that they can be faxed or emailed to our Tech Support Center (if need be) for expert advice.

Our Commander SK series have a wealth of programmable features that most customers know little about.

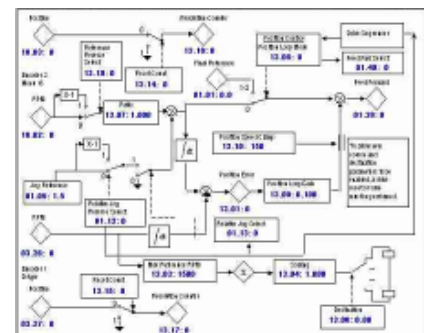
In our training class you will learn not only how to set-up, tune and diagnose our drives, but also learn to use many of the built-in programmable features such as Logic Gates, Time Delays, Variable Selectors, the MOP, Comparators PID Controller, etc that will allow you to get the most out of the drives for your company's manufacturing needs.

You don't have much experience with computers ?

Don't worry- many of our students don't either



We teach you what you need to know to be able to use our Drive Software effectively. If you have had little time behind a PC, you'll be amazed at what you will be able to do after this course. The use of the PC is a very important tool in today's Drive world and for that reason is a very integral part of this course. You will learn how to use CTSofT to view the inside setup and dynamic signal flow in an easy-to-interpret graphical format. You will learn how to customize your drive set-ups and most importantly how to save and retrieve specific drive set-ups should drive duplication be necessary.



Learn about alternate methods of accessing "advanced parameters" quickly without needing a laptop – even from a remote location using our "plain text" Remote Keypad unit

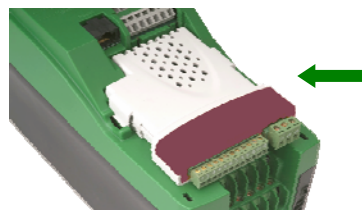
You don't carry a laptop to the jobsite ?



Smart Stick data storage & recovery operations are covered. This is how we "clone" SK Drives so that complex setups can be readily duplicated without needing a laptop

Learn about SK Options ?

Learn about Commander SK Option modules that extend the drives functionality- such as the "Real Time Clock" w/Time & Date functions



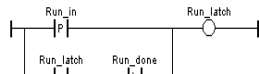
#TRNG-122 Commander SK \$400- 2 Days /SyPT Lite \$200 1 Day

Students not wishing to attend the SyPT Lite programming portion are free to leave after Day 2

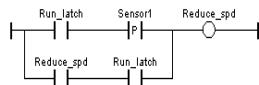
This is a fast paced class on the Commander SK Open Loop AC Drive with an optional 3rd day on the use of the SyPT Lite programming tool . Upon completion the class, you will be able to recognize unique applications for the Commander SK, perform basic drive configuration, complete start-up, and understand troubleshooting / diagnostics on the drive. Hands-on labs cover Keypad, LogicStick and SmartStick operation, parameter configuration and tuning for open loop vector mode. You will gain an understanding of the drive's menu structure as well as becoming familiar with the CTSoft drive configuration tool.

Optional day 3 will include exercises using advanced parameters and SyPT Lite programming software

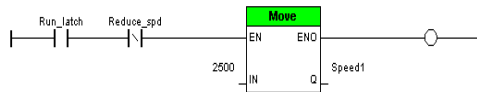
(* Detect a positive edge transition for the run command *)



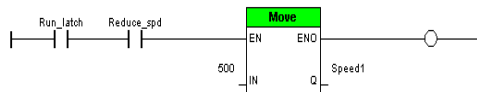
(* Detect Sensor 1 and latch the reduce speed output *)



(* Run at high speed *)



(* Set the low speed for the conveyor *)



Commander SK drives can execute PLC Ladder programs to achieve those miscellaneous functions outside what the base drive can do. SyPT Lite , our PLC configuration software, allows you to create a custom application, place it into the Logic Stick (shown above) and be executed by the drive to achieve the functions you require-all residing inside for compact system solutions.

Come to the course and you will take home a CDROM packed with Application Examples, Basic, Advanced and Option module manuals, Troubleshooting Guides, 4 Channel Color Software Scope, SyPT Lite PLC software, Drive Configuration Software Setup and Diagnostic Tools and much, much more.



Upcoming Course Dates-2011 \$400 (+\$200)/Student	
Feb 1-2(3) FM	May 10-11(12) GI
Aug 23-24(25) GI	Nov 8-9(10) GI
FM- Ft Myers Florida	GI- Grand Island New York

For further information, questions or to discuss having one of our standard courses conducted at your facility, please contact our Grand Island Training Center by email at training.cta@emerson.com or by phone at 1-800-367-8067.

Registration Information

Our Training/Service Center, located on Grand Island, is just 10 minutes from this very popular tourist and historic site. Enjoy the extra value of the US Dollar while in Canada by just crossing the bridge at the Falls. Many of our students bring their family with them to combine business with pleasure.

Contact our registration desk for any special accommodation needs, directions, maps and ideas for things to do and see while here.



Student Name: _____

Company Name: _____

Address: _____

City/State/ZIP: _____

Phone: _____

Fax: _____

Email: _____

Payment: _____

Please Register me for the following Class:

Course: _____

Dates: _____

Please make hotel reservations on my behalf

Arrival Date: _____

Hotel: Grand Island / Niagara Falls

Class Times

Classes begin each day at 8:30am and end at approximately 4:30pm unless otherwise noted.

Transportation

Transportation from the Buffalo/Niagara International Airport is not provided. Taxi service is very limited on Grand Island; a rental car is recommended.

Hotel Accommodations

Hotel arrangements can be made on your behalf at a preferred rate at the Holiday Inn in Niagara Falls or here on Grand Island. Both are convenient to the Training Center, although the Niagara Falls location has a little more to offer during free evening hours.

Holiday Inn – Grand Island (716)-773-1111

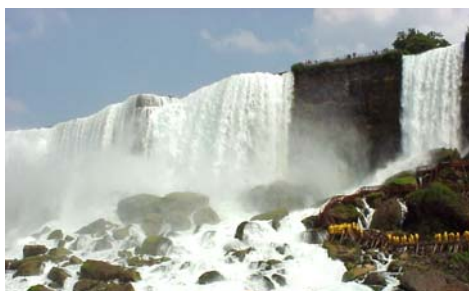
Resort hotel located about 7 miles from the Training Center. Offers indoor pool, golf, restaurant, lounge, and work-out rooms. 10 or 15 minute ride to Buffalo or Niagara Falls. www.holiday-inn.com/grandislandny

Holiday Inn – Niagara Falls

Downtown hotel located 10-15 minutes from the Training Center. Offers swimming, restaurant, lounge, exercise room, walking distance to The Falls and Canada, as well as many other tourist attractions.

www.crowneplaza.com/niagarafalls

Phone 1-800-367-8067 - Fax 716-774-8327 – Email: training.cta@emerson.com



See one of the Seven
Wonders
of the World

Bring Your Camera!



www.niagara-usa.com